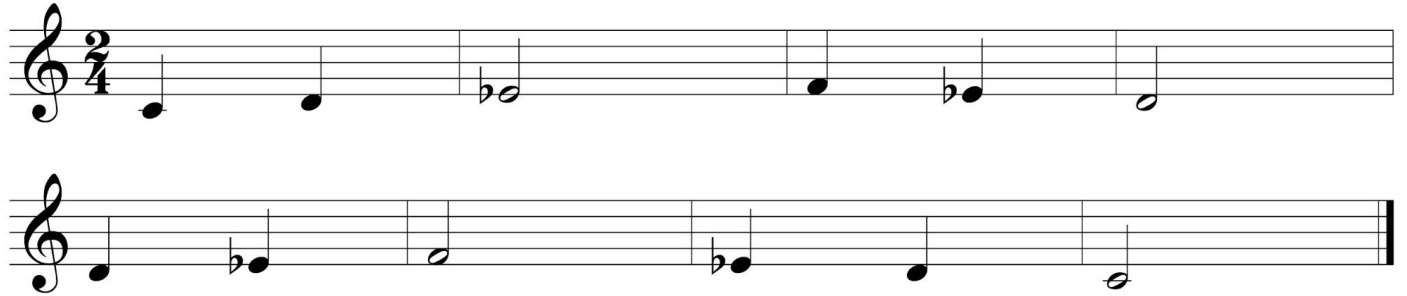


4.3. Reproducción de motivos melódicos. Ejemplos.

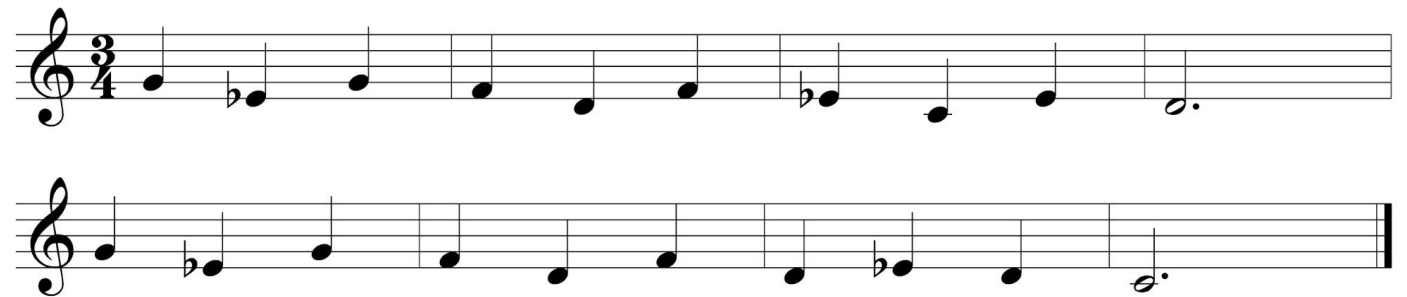
A continuación podéis ver una serie de motivos melódicos de ejemplo que podéis utilizar. Os los presento ordenados según dificultad creciente. Puedes bajarte los audios [aquí](#).

Nivel 1: melodías a transportar y armonizar



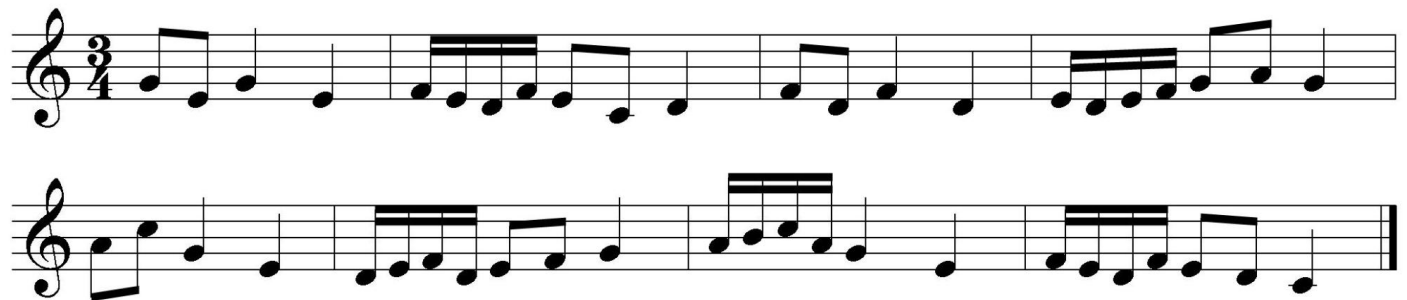


Two staves of musical notation in 2/4 time. The first staff contains a sequence of notes: C4, D4, E4, F4, G4, A4, B4, C5. The second staff contains a sequence of notes: C4, D4, E4, F4, G4, A4, B4, C5.

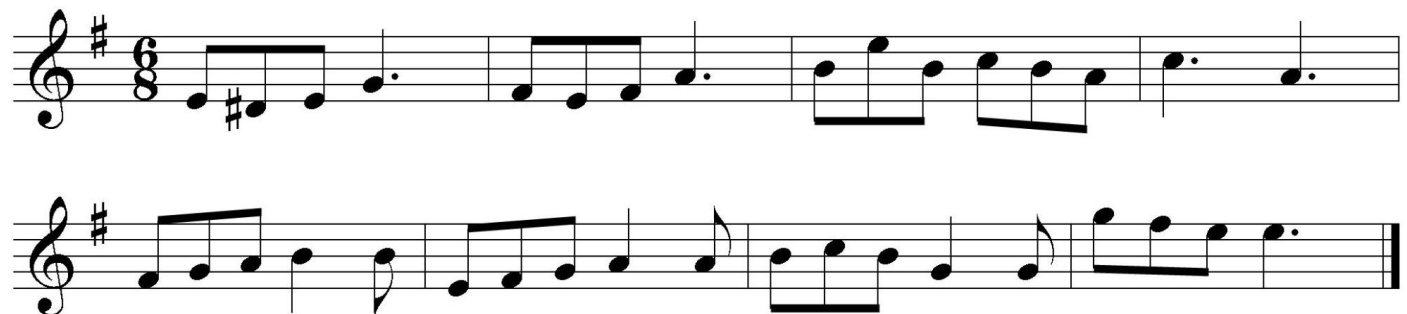


Two staves of musical notation in 3/4 time. The first staff contains a sequence of notes: C4, D4, E4, F4, G4, A4, B4, C5. The second staff contains a sequence of notes: C4, D4, E4, F4, G4, A4, B4, C5.

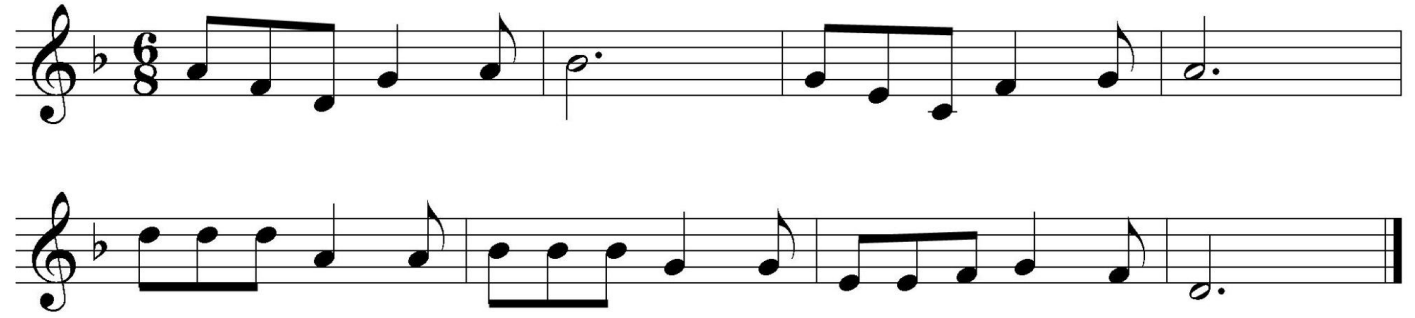
Nivel 2: melodías a transportar y armonizar



Two staves of musical notation in 3/4 time. The first staff contains a sequence of notes: C4, D4, E4, F4, G4, A4, B4, C5. The second staff contains a sequence of notes: C4, D4, E4, F4, G4, A4, B4, C5.

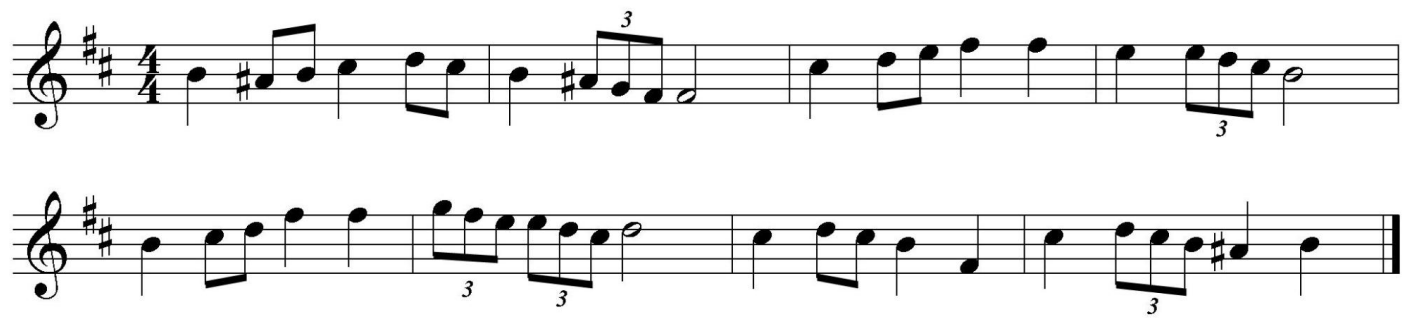


Two staves of musical notation in 3/4 time with a key signature of one sharp (F#). The first staff contains a sequence of notes: C4, D4, E4, F#4, G4, A4, B4, C5. The second staff contains a sequence of notes: C4, D4, E4, F#4, G4, A4, B4, C5.

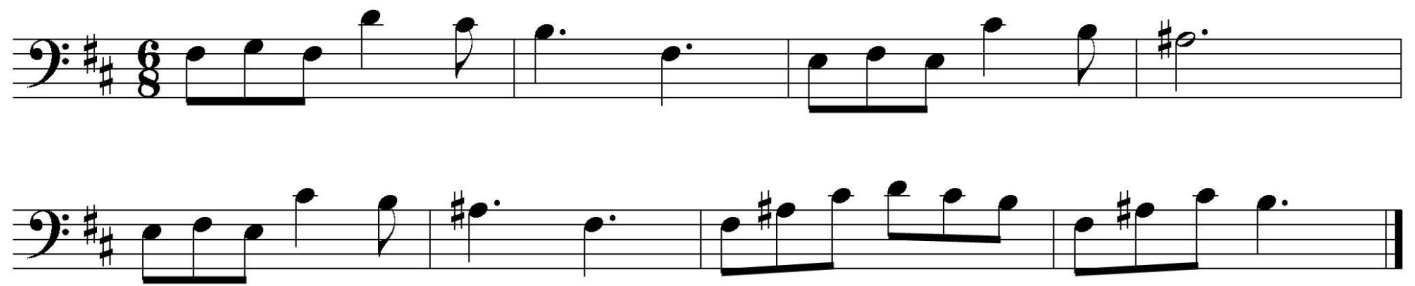


Two staves of musical notation in 6/8 time, key of Bb. The first staff contains a melody with a dotted half note. The second staff contains a bass line with eighth notes and a final whole note.

Nivel 3: melodías a transportar y armonizar



Two staves of musical notation in 4/4 time, key of D major. The first staff contains a melody with a triplet of eighth notes. The second staff contains a bass line with eighth notes and a triplet of eighth notes.



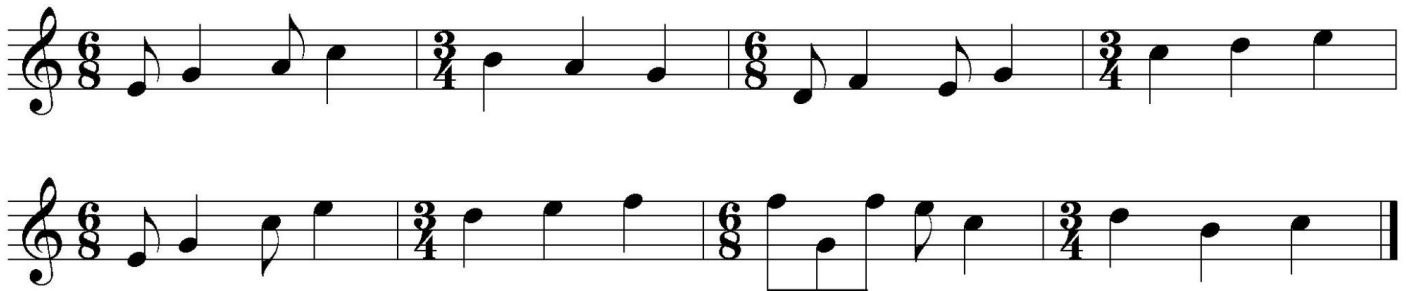
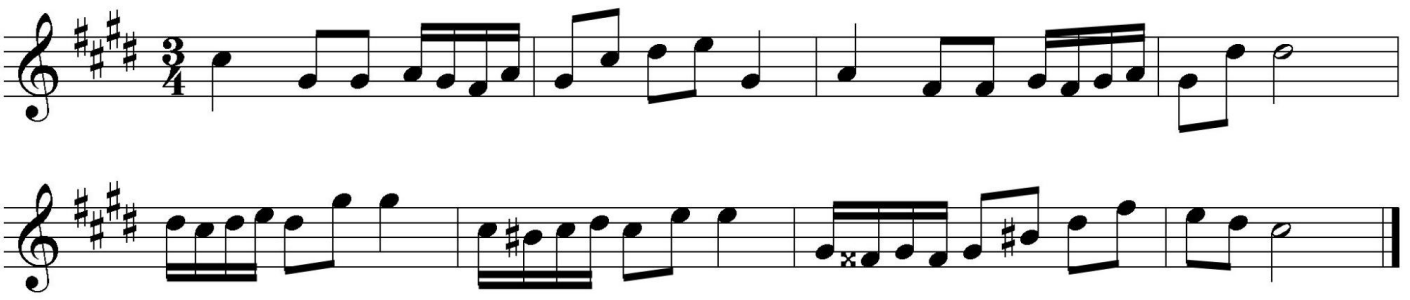
Two staves of musical notation in 6/8 time, key of D major. The first staff contains a melody with eighth notes and a dotted half note. The second staff contains a bass line with eighth notes and a dotted half note.



Two staves of musical notation in 12/8 time, key of D major. The first staff contains a melody with eighth notes and a dotted half note. The second staff contains a bass line with eighth notes and a dotted half note.



Nivel 4: melodías a transportar y armonizar





Revision #1

Created 2023-06-23 13:28:18 CEST by Equipo CATEDU

Updated 2023-06-23 13:36:33 CEST by Equipo CATEDU