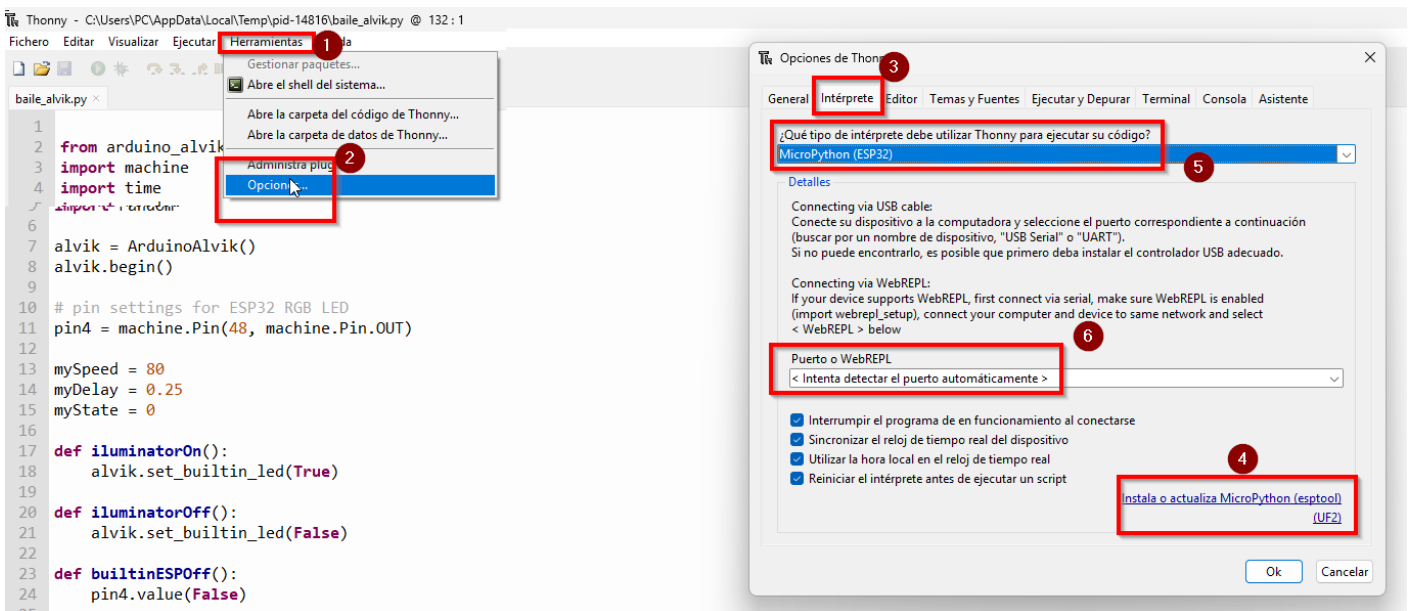


Instalar el firmware

Dentro de Thomy nos vamos a

1. Herramientas
2. Opciones
3. Interpretre
4. Instala o actualiza Micropython (ver apartado más abajo)
5. Interpretre: ESP32
6. Puerto (el que sea COMx)



Instalar el firmware

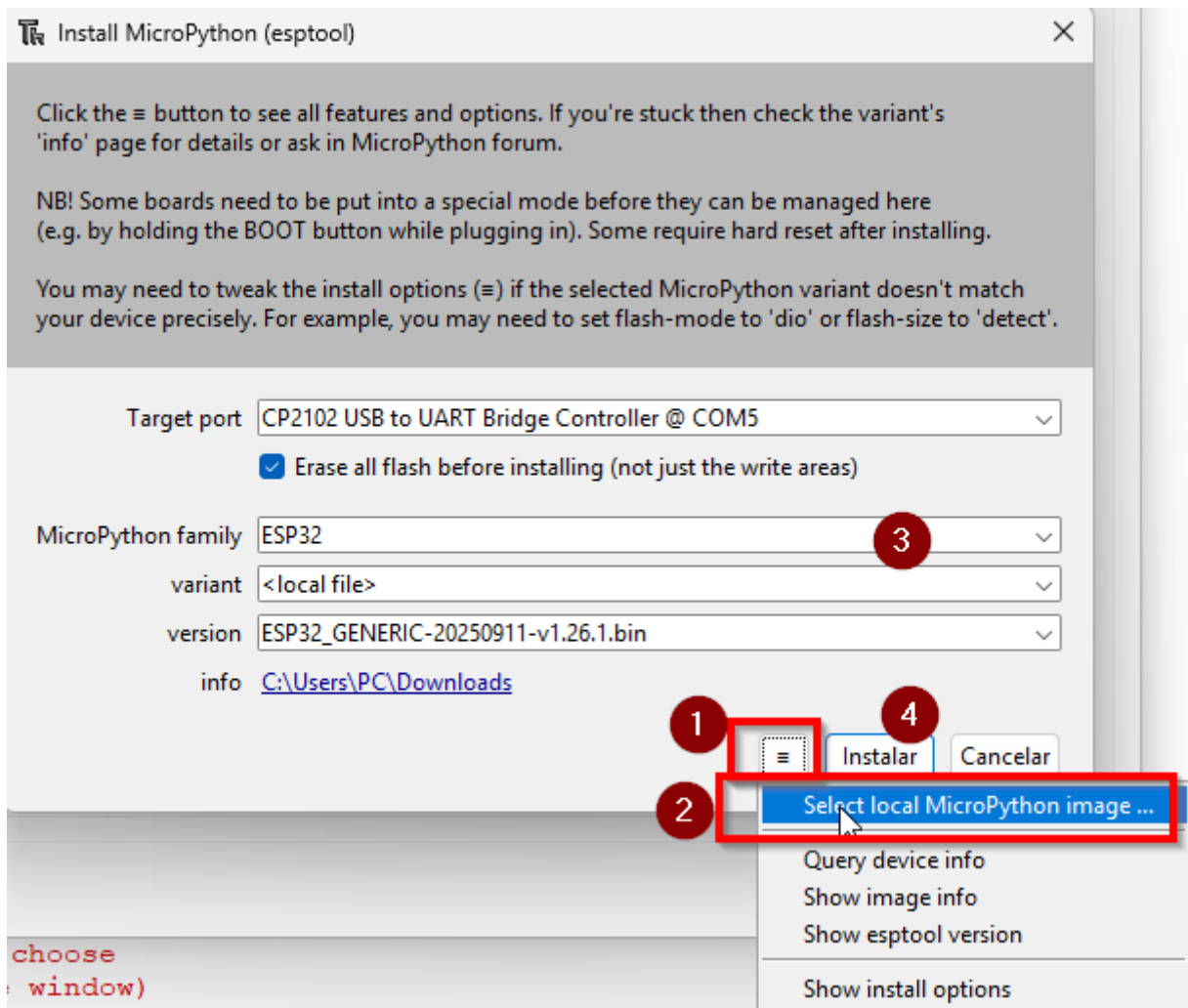
Descargamos de la web https://micropython.org/download/ESP32_GENERIC/ el firmware más actual

Firmware

Releases

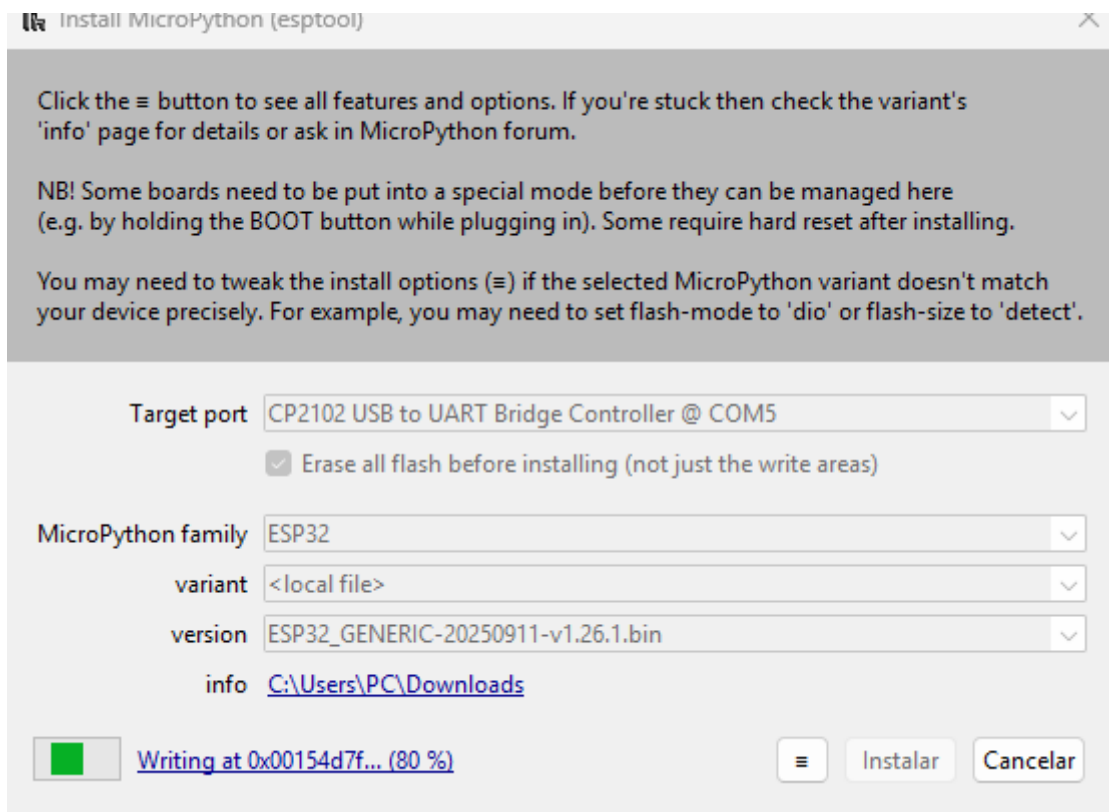
v1.26.1 (2025-09-11) .bin / [.app-bin] / [.elf] / [.map] / [Release notes] (latest)
v1.26.0 (2025-08-09) .bin / [.app-bin] / [.elf] / [.map] / [Release notes]
v1.25.0 (2025-04-15) .bin / [.app-bin] / [.elf] / [.map] / [Release notes]
v1.24.1 (2024-11-29) .bin / [.app-bin] / [.elf] / [.map] / [Release notes]
v1.24.0 (2024-10-25) .bin / [.app-bin] / [.elf] / [.map] / [Release notes]
v1.23.0 (2024-06-02) .bin / [.app-bin] / [.elf] / [.map] / [Release notes]
v1.22.2 (2024-02-22) .bin / [.app-bin] / [.elf] / [.map] / [Release notes]
v1.22.1 (2024-01-05) .bin / [.app-bin] / [.elf] / [.map] / [Release notes]
v1.22.0 (2023-12-27) .bin / [.app-bin] / [.elf] / [.map] / [Release notes]
v1.21.0 (2023-10-05) .bin / [.app-bin] / [.elf] / [.map] / [Release notes]
v1.20.0 (2023-04-26) .bin / [.elf] / [.map] / [Release notes]
v1.19.1 (2022-06-18) .bin / [.elf] / [.map] / [Release notes]
v1.18 (2022-01-17) .bin / [.elf] / [.map] / [Release notes]

Y ahora al pinchar en el punto 4 anterior nos sale este diálogo



1. Pulsamos en las tres rayas horizontales
2. Seleccionamos la imagen Micropython que hemos descargado de https://micropython.org/download/ESP32_GENERIC/
3. Automáticamente se rellenan los campos
4. Instalar

La instalación dura unos 5 minutos pues **tiene que instalarse dentro del ESP32**



Revision #1

Created 2025-10-23 12:22:27 CEST by Javier Quintana

Updated 2025-10-23 12:30:51 CEST by Javier Quintana